

## TT Boost Gauge Pod Installation Instructions

1. Remove factory vent assembly by carefully prying on the edge of aluminum ring until the assembly can be grabbed.



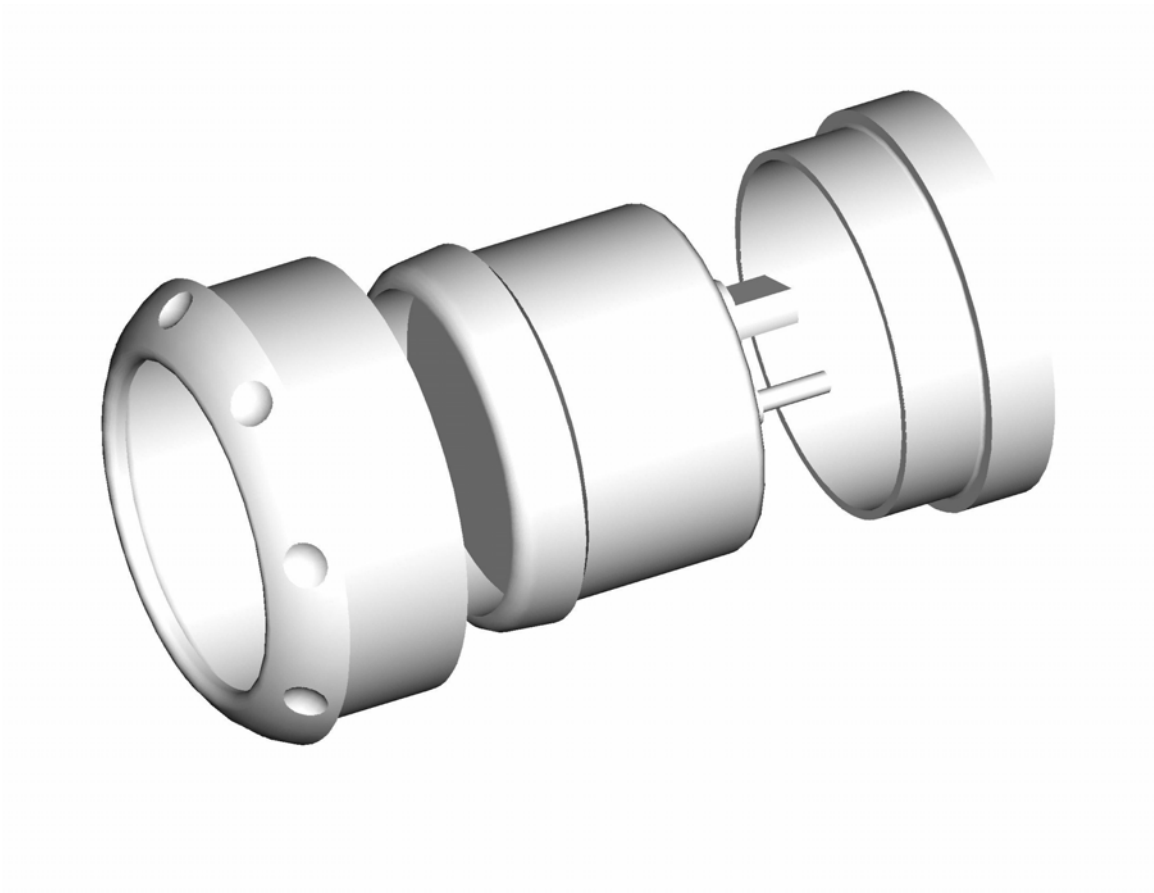
2. The inside opening may need some trimming from a straight to a round edge. Check fitment before cutting.



3. Place vent block (4 ½" square foam) into plastic vent opening. Do not push foam in to far, as it will block next vent over. Just try to seal off the vent. You check for position by turning on the AC fan. A very small amount of air may still be detectable.



4. Assembly Pod and gauge by place gauge inside back and turning until gauge is tight against face; wrenches are not required for assembly nor recommended. The assembly is designed to fit together tightly so some effort might be needed to push gauge onto back item.



5. Attach flexible line or wires to gauge as per gauge manufacturer instructions.
6. Attach signal line to diverter valve vacuum line.
7. Attach gauge light wire to a fuse or other source connected to the dash lighting circuit.
8. Place assembly into dash.

