

**Audi**

Please give copies to  
all your Audi Technicians

# Technical Bulletin

Subject: Remote Transmitter (Folding Key)  
Battery Performance Testing

Group: 57

Number: 01-01

Model(s): All

1998▶

Date: April 10, 2001

## Condition

Remote transmitter(s) are permanently or intermittently inoperative.

## Service

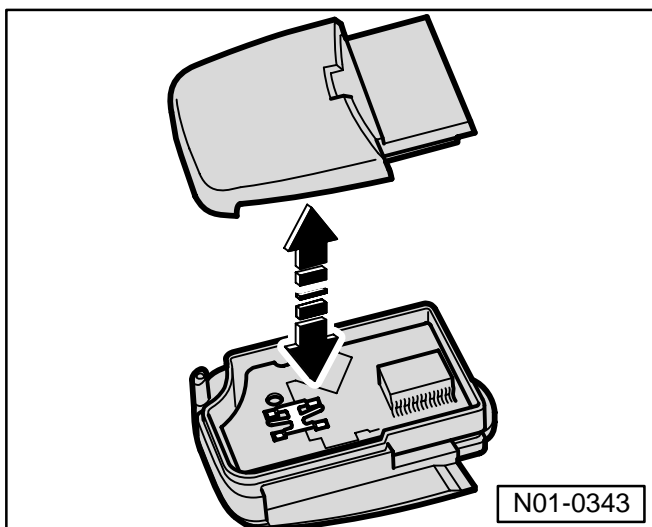
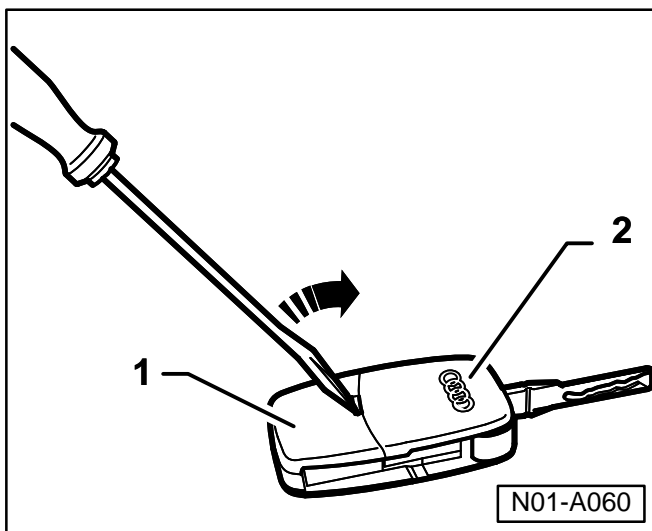
Prior to replacing remote transmitter, verify that voltage of each transmitter battery is at least 3.0 volts.

### Note:

*Be sure to obtain all remote transmitters from customer when servicing, replacing, or adding transmitters.*

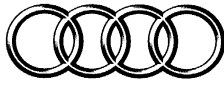
### To check voltage of remote transmitter key:

- ◀ – Insert screwdriver in slot between transmitter unit and main key (arrow).
- Move screwdriver carefully in the direction of arrow to unclip transmitter unit from main key.
- ◀ – Pull apart transmitter unit as indicated by arrow.
- Remove batteries from retainer using a screwdriver.
- Check voltage of each battery using a voltmeter (Multimeter VAG 1526, VAG 1526A, Fluke 83, Volt-Amp tester or equivalent).
- ◆ Battery voltage must be at least 3.0 volts.



C 57-01-01

1 of 3



**Audi**

Please give copies to  
all your Audi Technicians

# Technical Bulletin

## **CAUTION!**

*Part numbers are for reference only.  
Always check with your Parts Dept. for  
the latest parts information.*

If battery voltage is below 3.0 volts:

- Replace both batteries (even if only one battery is below 3.0 volts).

If battery voltage is 3.0 volts or greater:

- Verify that central locking control unit -J429- is coded correctly, and that remote transmitters are properly matched to central locking control module. See Repair Manual, Repair Group 01 “Central Locking System, On-Board Diagnostic (OBD)” for the respective model.

- ◆ Use battery Part No. N 104 372 01.
- ◆ Measure voltage of each new battery before installing.

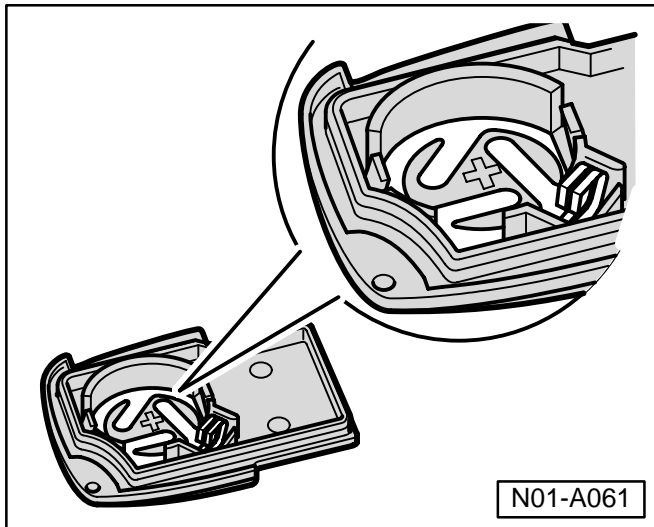
## **To install new remote transmitter batteries:**

- ◀ – Place battery, with positive terminal (marked on housing) facing down, into sender unit.
- Press down slightly on battery to seat it in transmitter housing.

### **Note:**

*Ensure batteries are installed correctly.  
Batteries installed with incorrect polarity could  
become damaged and/or change polarity.*

- Replace cover on transmitter body (be careful not to damage seal).
- Reattach transmitter unit to main key.
- After checking or replacing remote transmitter batteries, verify proper operation of central locking system.





**Important!**

**Audi**

Please give copies to  
all your Audi Technicians

# Technical Bulletin

**Note:**

*Remote transmitters may need to be re-programmed to match the central locking control module -J429-. See Repair Manual, Repair Group 01 "Central Locking System, On-Board Diagnostic (OBD)" for the respective model.*

**If transmitter key battery is replaced under New Vehicle Limited Warranty, use the following:**

<b>Part ID:</b>	<b>5708</b>
<b>Labor Operation:</b>	<b>57085500 20 TU</b>

**Note:**

- ◆ *Send batteries, when requested for Warranty purposes, individually-wrapped to Warranty Parts Test Center (batteries must not contact each other).*
- ◆ *Batteries, when requested for Warranty purposes, must be accompanied by a completed warranty parts tag and repair order, detailing customer complaint, voltages of new and replaced transmitter batteries and part numbers of batteries installed.*

**Note:**

*Warranty claims for replacing remote transmitters will be denied if low battery voltage is found to be the cause, and/or transmitter batteries, warranty parts tag, and repair order are not returned with faulty remote transmitters.*