



**Audi**

**Important!**

Please give copies to  
all your Audi Technicians

# Technical Bulletin

Subject: Cellular Telephone, Installation Instructions

Group: 91

Number: 99-01

Model(s): TT Coupe

2000

Date: Apr. 19, 1999

## Service

The following pages contain cellular telephone installation instructions for the model listed above.

Description	Part No:	Qty
Telephone	441 035 001F	1
Installation Kit	8N0 051 431	1

### Seat, removing

**WARNING!**

*Observe safety regulations when performing work on airbags (see Repair Group 69 of appropriate Repair Manual).*

- Disconnect battery ground strap.

◀ Remove front passenger seat -1- as follows:

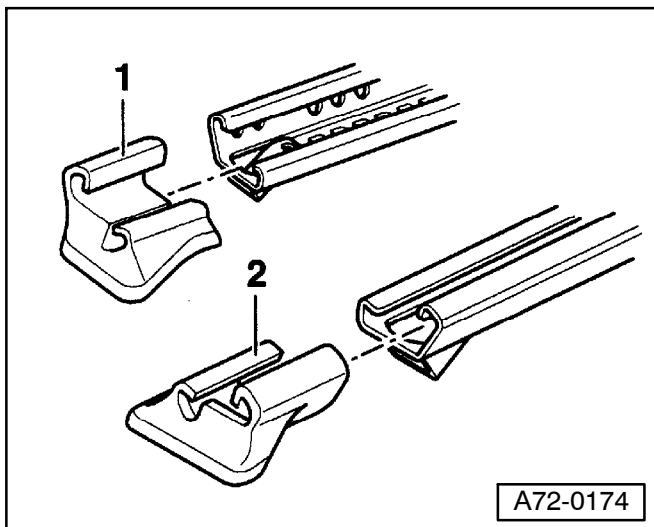
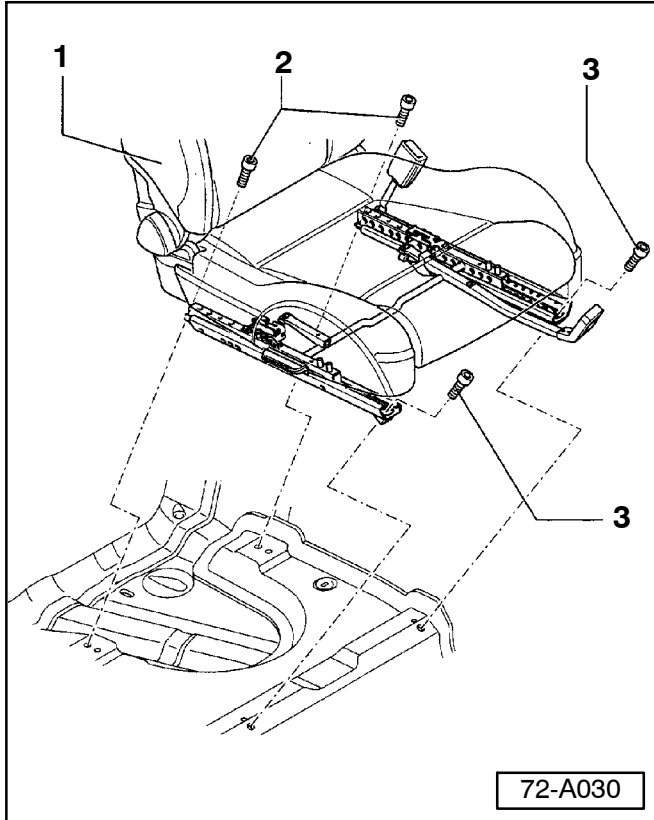
- Move seat all the way forward.
- Remove bolts -2- (tightening torque 30 Nm).
- Move seat all the way back.

◀ - Remove plastic trim -1- and -2- from seat rails

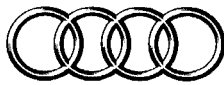
- Remove bolts -3- see illustration 72-A030 (tightening torque 30 Nm).

**CAUTION!**

*Part numbers are for reference only. Always check with your Parts Dept. for the latest parts information.*



(Cont. on Page 2)

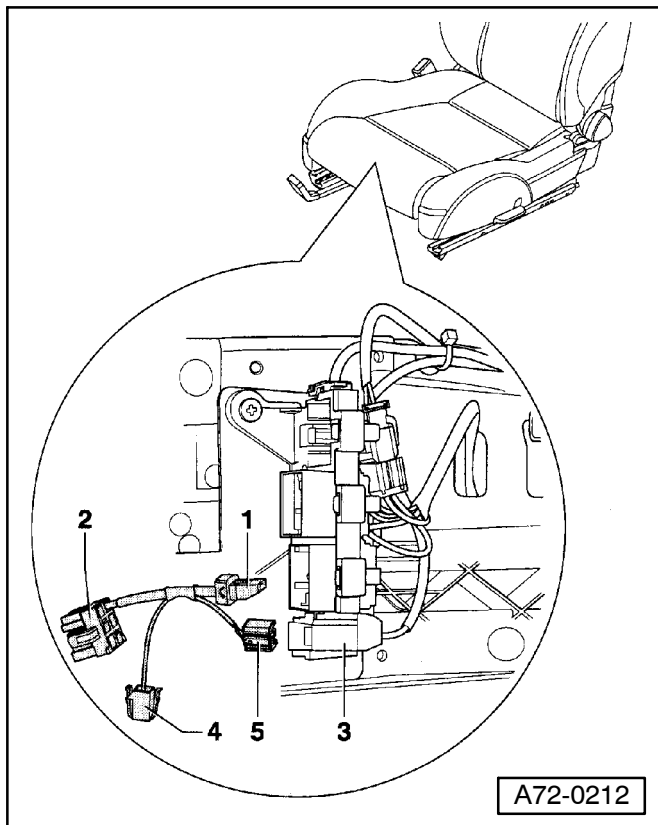


**Audi**

**Important!**

Please give copies to  
all your Audi Technicians

# Technical Bulletin



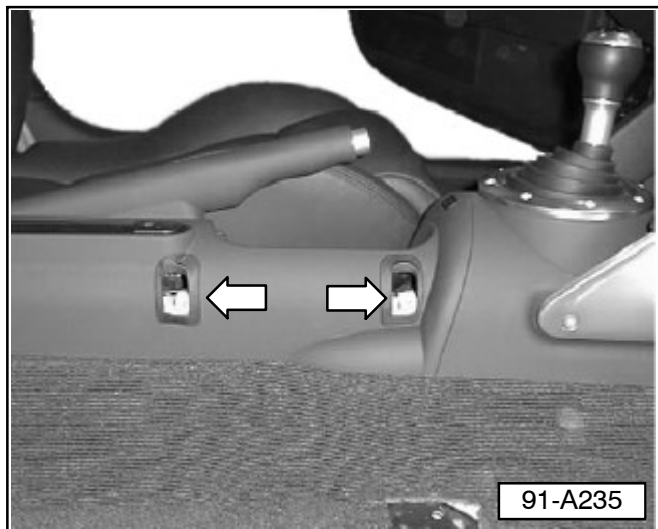
**WARNING!**

**Technician must discharge him/herself electrostatically. (Briefly touch door striker or vehicle body.)**

- Tip seat backwards and disconnect electrical connectors.
- Connect igniter wire -3- from airbag module to connector -5- (airbag adapter) VAS 5094.
- Remove seat from vehicle.

**WARNING!**

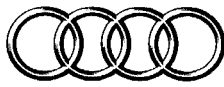
**Airbag adapter VAS5094 must remain connected on seat until seat has been re-installed.**



### Handset cradle, installing

- Remove small close out covers from center console on passenger side to expose handset mounting bracket fastening points.
- ◀ - Install rubber isolators -arrows- into openings of the center console.

(Cont. on Page 3)

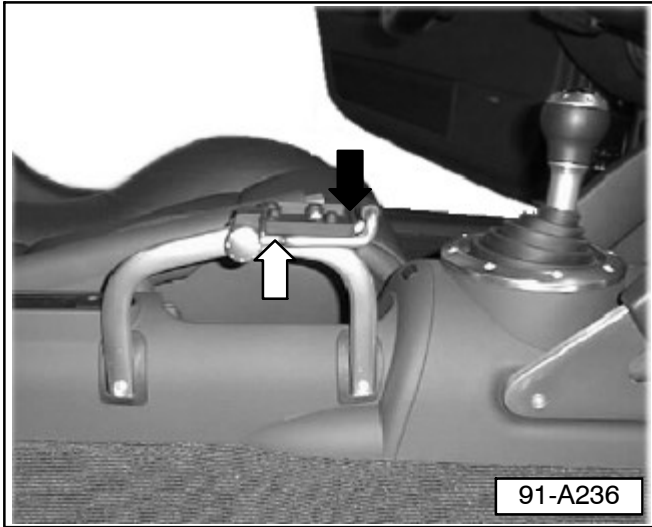


**Audi**

**Important!**

Please give copies to  
all your Audi Technicians

# Technical Bulletin



- Install hang-up cup to handset bracket using two slotted machine screws through bottom rear of handset bracket -white arrow- and one philips head machine screw through top front of hang-up cup -black arrow-.

- ◀ - Install handset bracket to console using supplied screws.



- ◀ - Install handset into hang-up cup and plug handset harness into connector -arrow- in the center console.

- Reinstall seat in reverse order of removal.



## Transceiver, installing

- ◀ - Open trim door in left close out panel in luggage compartment, locate antenna coaxial cable connector -white arrow- and transceiver harness -black arrow-.

(Cont. on Page 4)

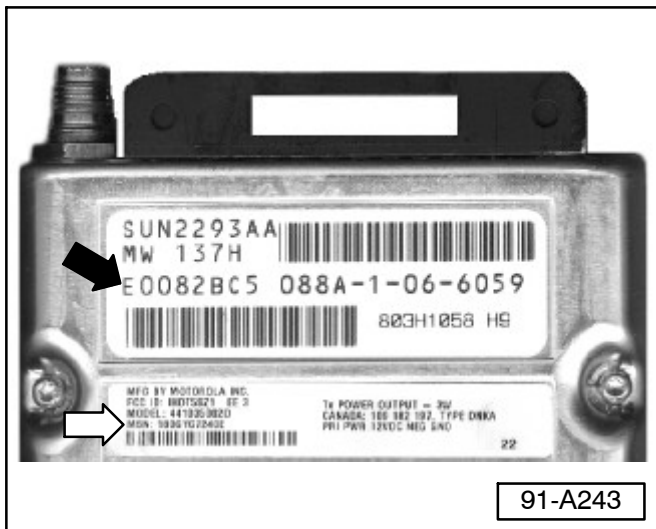


**Audi**

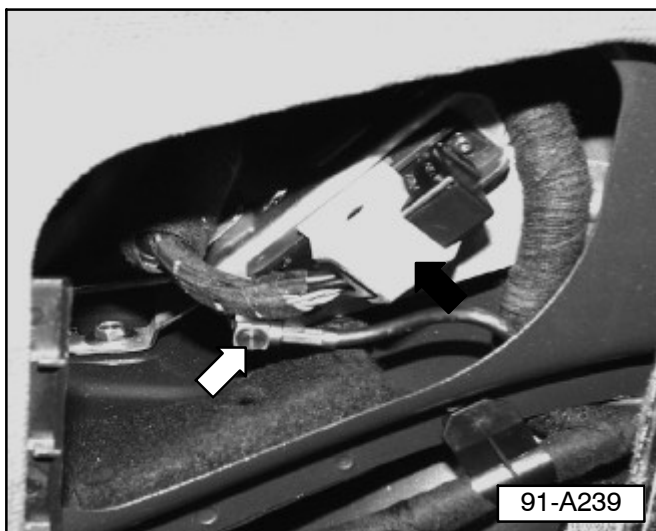
**Important!**

Please give copies to  
all your Audi Technicians

# Technical Bulletin



- Prior to installing transceiver, write down Electronic Serial Number (ESN) -black arrow- and Mechanical Serial Number (MSN) -white arrow-. These numbers are needed to register and activate phone.

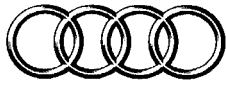


- Slide transceiver into factory installed bracket
- Connect coaxial cable -white arrow- and wire harness -black arrow- to the transceiver (orient and fasten as necessary to prevent rattles).
- Close trim door.
- Install antenna mast onto factory installed antenna base on roof.

**WARNING!**  
*Ensure that there is no person inside the vehicle when re-connecting battery ground strap.*

- Reconnect battery ground (GND) strap.
- Connect VAG 1551 scan tool.
- After connecting battery, check vehicle equipment (radio code, clock, electric windows) as per Repair Manual and/or Owner s Manual.
- Check and erase any stored DTC s.
- Program radio station presets.

(Cont. on Page 5)



**Audi**

**Important!**

Please give copies to  
all your Audi Technicians

# Technical Bulletin

---

## Transceiver, registering

The Electronic Serial Number (ESN) and Mechanical Serial Number (MSN) of new transceivers (printed on bar-code label on transceiver) must be registered with a Cellular Service Provider (carrier) before the telephone can be activated.

**CAUTION!**

***DO NOT attempt to place a call before programming the telephone or before the Cellular Telephone Company has activated the phone number.***

See programming instructions and operators manual (supplied with installation kit).

Contact the preferred Cellular Service Provider (carrier).

- Program telephone using information provided by both customer and Cellular Telephone Company.
- Place telephone programming instructions and operators manual inside the portfolio (with the Owners Manual located in glove box).